



The mark of
responsible forestry



since 2023



STRATO-STOCK®

Birch plywood panel
overlaid with plastic, born to last

Abrasion resistance

The product has been manufactured to resist abrasion caused by concrete.

Nailable

The plastic overlay improves nailability avoiding splintering and facilitating hole self closing.

Water resistance

The overlay creates a waterproof surface against chemical and weathering agents, avoiding deformations and increasing the panel's lifespan.

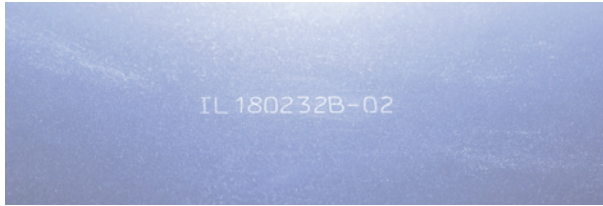
Easy cleaning

Waterproof polypropylene overlay allows for easy cleaning of concrete residues.

Technical Features

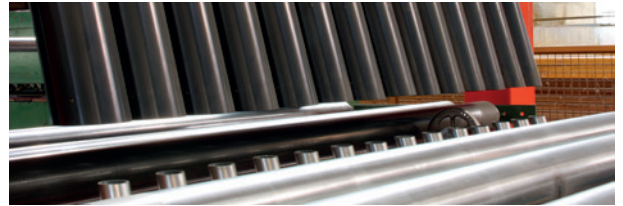
Traceability

The panel can be easily traced thanks to a laser engraved tracking number on the rear.



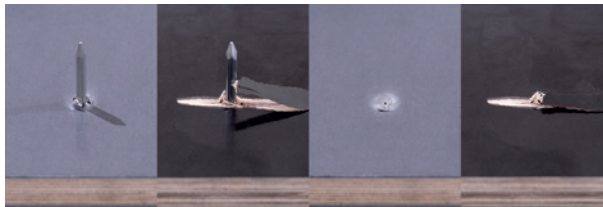
Quality control

The gluing process of each single panel is checked by ultrasound waves.



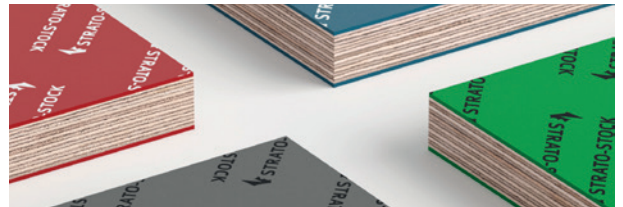
Nailability

Comparison between STRATO-STOCK® panel and filmfaced plywood panel.



Customisation

It's possible to customise plastic overlay with logo.

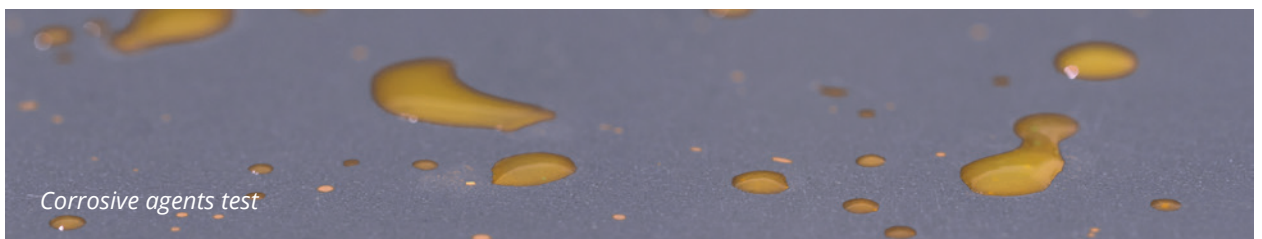


Mechanical strenght

Thickness EN 315	mm	8,5 · 9mm · 9,5	11,3 · 12mm · 12,5	14,2 · 15mm · 15,3	17,1 · 18mm · 18,2	19,8 · 21mm · 21,1
Bend. res. EN 789	MPa	59	58	41	40	50
E-modulus EN 789	MPa	4.100	4.500	5.600	6.000	7.300
Plies	n°	5+2	7+2	9+2	11+2	13+2
Weight	kg/m²	7,5	9	11,5	13,5	15,5

Overlay data sheet

Surface material water absorption	< 3%	ISO R62
Surface hardness	SHORE D>70, GARDNER 5, JANKA 5,345	Catas
Abrasion resistance CS17 500 g 10.000 revolutions	-0,25 g -0,14 mm	CS17 Solvay Lab.
Taber abrasion resistance	17.000 revolutions	UNI 9115 DIN 68861/2
Surface material resistant to combustion	23 mm/min	DIN 75200
Salt fog resistance	The Panel does not present alterations	DIN 50021 ISO9227



Web Site
Product Page

