

ILPA
www.ilpalegno.com



PUR-STOCK®

Concrete shuttering panel reinforced with a perimeter polyurethane edge with a high impact resistance

Strong

Traditional shuttering panel with plastic overlay.

- Reinforced corners
- Abrasion resistant
- Easy cleaning

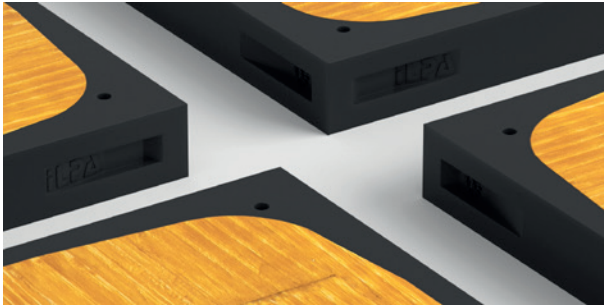
Light

Traditional 3 layer panel with surface coated with melamine resin.

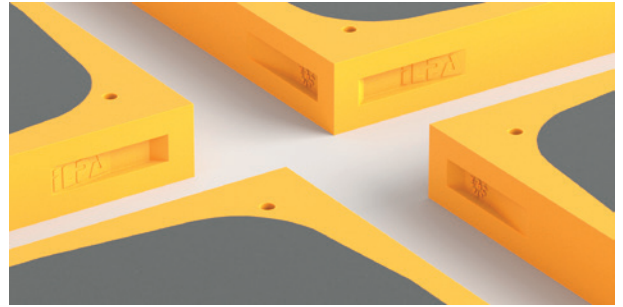
- Reinforced corners
- Light

Technical Features

PUR-STOCK® Light - PL



PUR-STOCK® Strong - PS



PUR-STOCK®

Formwork panel with perimeter edges protection.

This protection is obtained by high-pressure injection of polyurethane, which protects the corners against breakage caused by accidental falls.

The **Light version** is a good compromise between tradition and innovation.

The **Strong version** is the solution that allows maximum performance as it guarantees easy surface cleaning, a perfect finish of the concrete, and long use of the panel.



TYPE PS / 18
Thickness: 18 mm



TYPE PS / 21
Thickness: 21 mm



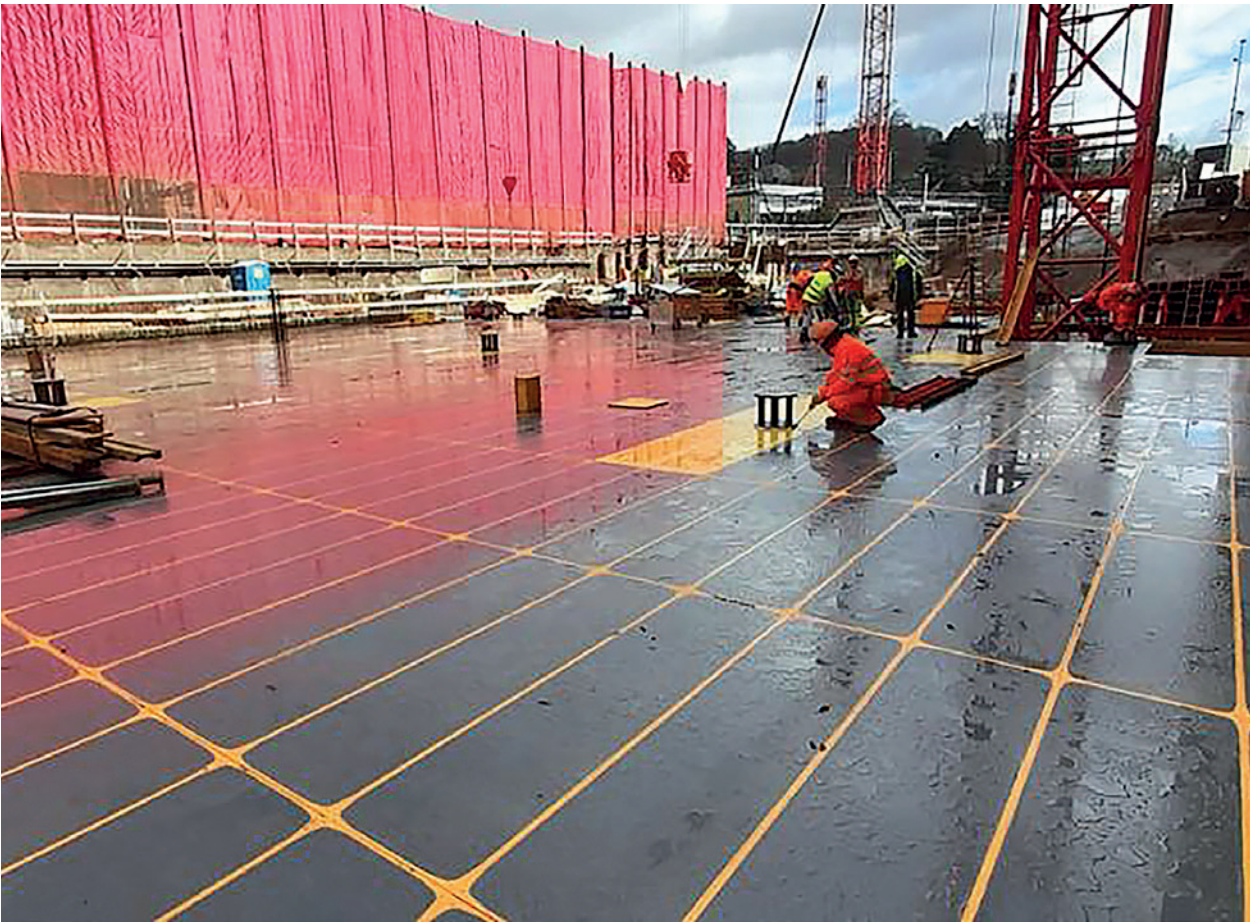
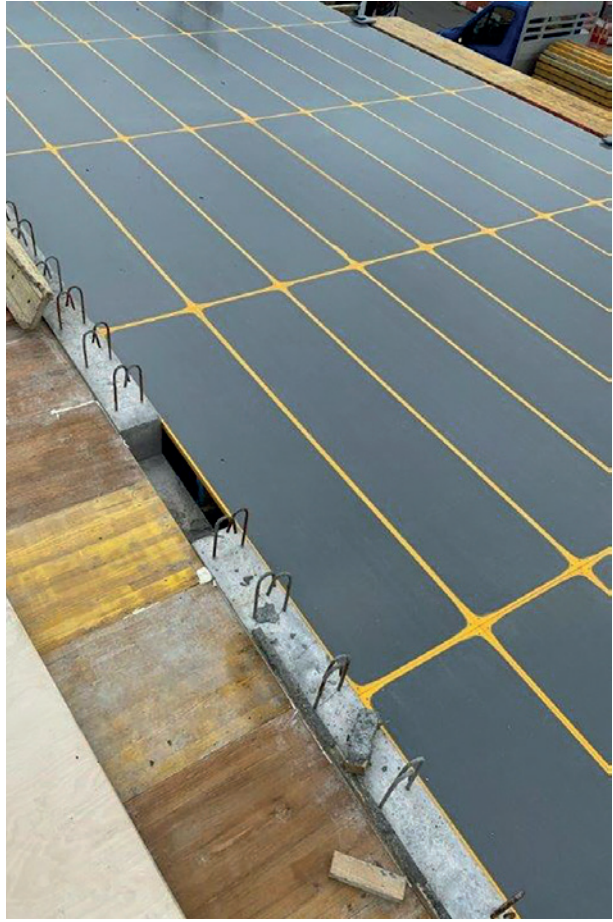
TYPE PS / 27 | TYPE PL / 27
Thickness: 27 mm

Core structure: birch plywood / three crossed spruce layers



PUR-STOCK® Light / Strong

Type		PS / 18	PS / 21	PS / 27	PL / 27
Thickness ± 0,5	mm	18	21	27	27
Weight	kg/m ²	14	15,5	15,5	13,5
Bending resistance EN 789	MPa	44	33	35	37
E-modulus EN 789	MPa	6.000	7.300	8.200	8.250
Dimensions	mm	500x2000	500x2000	500x2000	500x2000



Web Site
Product Page



Video
Presentation



Video
Stress Test



